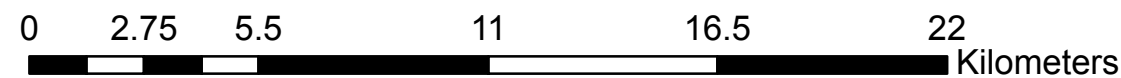
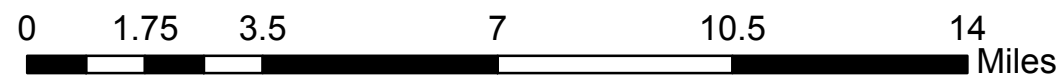
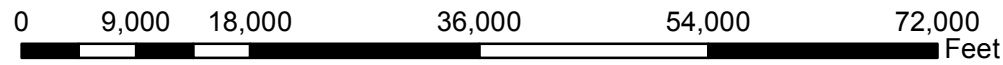
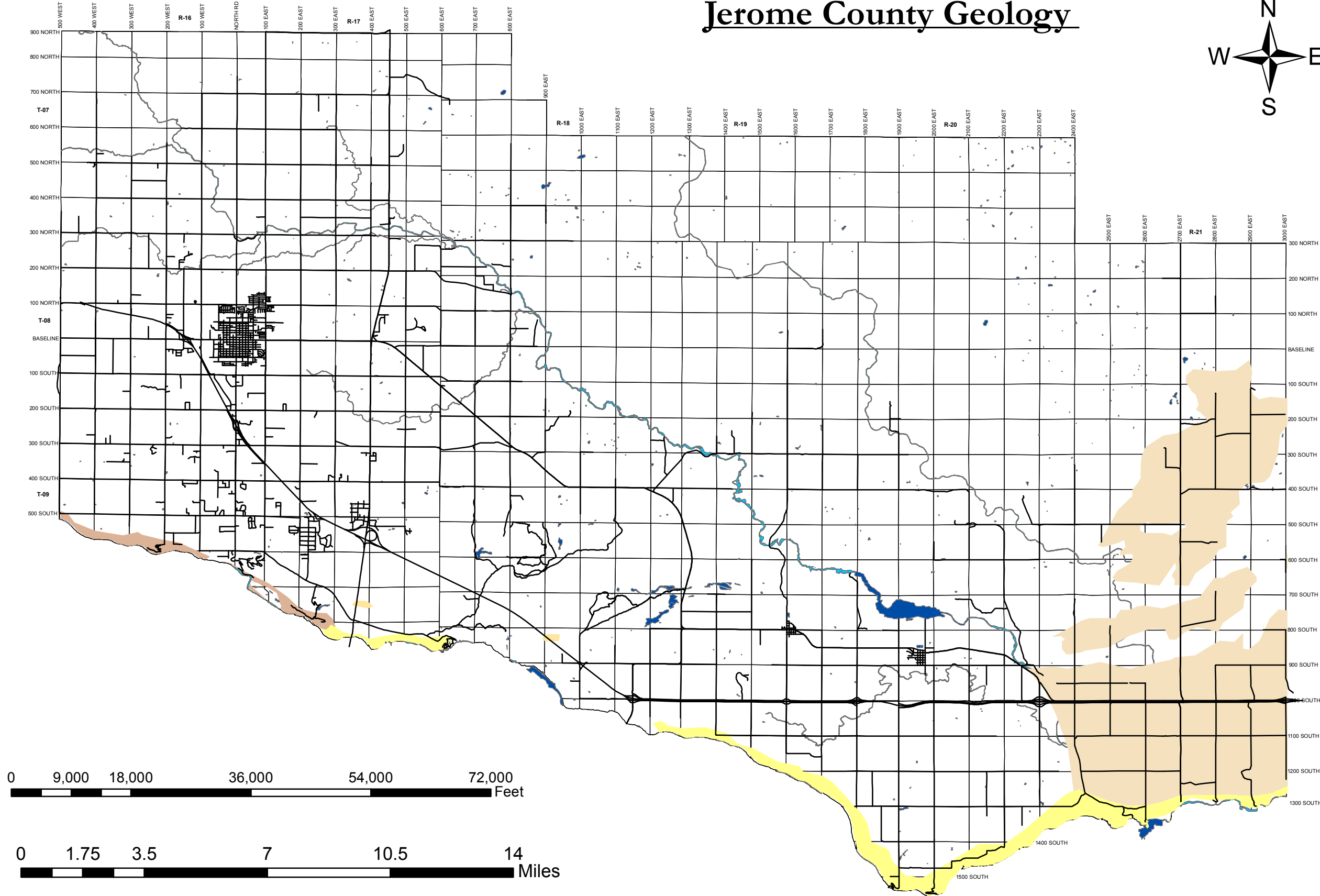
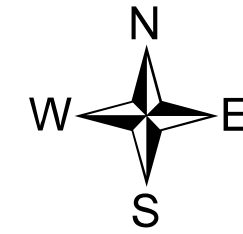


# Jerome County Geology



## Legend

idgeol\_Jerome\_county

### ROCKTYPE1

- alluvium
- basalt
- loess
- stratified glacial sediment

This map is a graphic depiction only.  
Exact boundaries are defined  
in the legal descriptions  
located at the Jerome County  
Clerk's Office.  
Jerome, Idaho

Print Date: October 17 2017  
Created by Mark Reyes  
Jerome County GIS Department